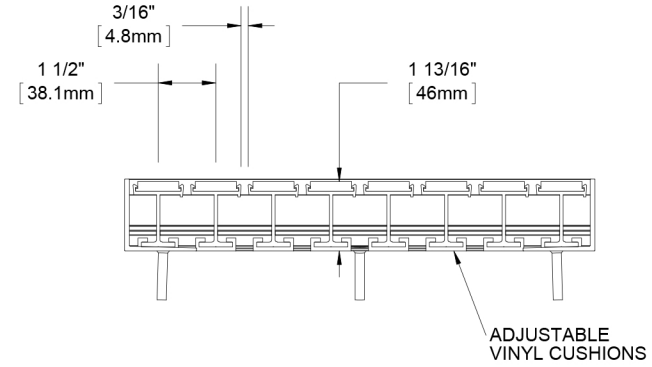
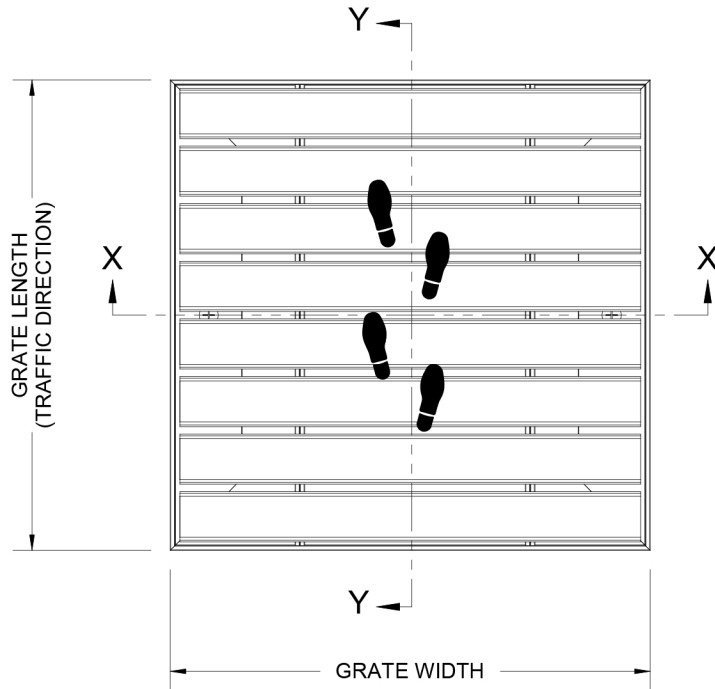
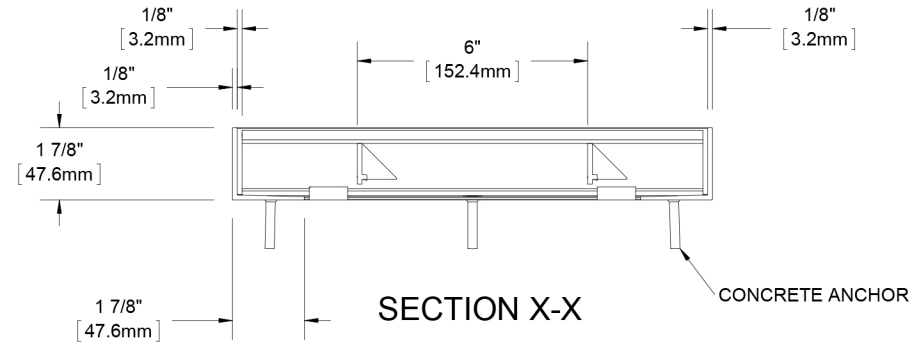




- *BGD74P PREMIUM CARPET INSERT
- *BGD74R RUGGED SCRUB INSERT
- *BGD74V VINYL INSERT
- *BGD74E ECOTREAD INSERT
- *BGD74U RIBBED RUBBER INSERT
- BGD74G VINYL ABRASIVE INSERT
- BGD74X Poured ABRASIVE
- *BGD74A SERRATED ALUMINUM
- *BGD74B BRUSH INSERT



SECTION Y-Y



SECTION X-X

NOTES:

- STANDARD MAXIMUM SECTION SIZE OF GRATE WIDTH NOT TO EXCEED 8'-0", CUSTOM SECTIONING AVAILABLE
- FRAME ANCHOR SPACING: 6" FROM CORNERS, 24" MAX
- VERIFY TRAFFIC DIRECTION AND THAT SECTIONING DOES NOT OCCUR IN A TRAFFIC LANE
- ALL RAIL COMPONENTS ARE MADE OF 6063-T6 ALUMINUM ALLOY, ALL FRAME COMPONENTS ARE MADE OF 6063-T5 ALUMINUM ALLOY. KEYLOCKS ARE MADE WITH 6061-T6 ALUMINUM ALLOY
- TREAD RAILS MUST RUN PERPENDICULAR TO TRAFFIC DIRECTION
- TRAFFIC DIRECTION DIMENSION CAN ONLY BE CHANGE IN 1 1/2" (38.1 MM) INCREMENTS UNLESS OPTIONAL ALUMINUM FILLER IS INCLUDED
- GRATE DIMENSION ALLOWS FOR CLEARANCE BETWEEN GRATE SECTIONS AND FRAMES IN THE WIDTH DIMENSION

DESCRIPTION:

GRATEdesign® 1-3/4", Aluminum, Grate with Mechanically Fastened, Aluminum Frame

BGD74-FLBM

SCALE: NTS

F-Lang

* AVAILABLE IN ALTERNATING TREADS

Harbor City Supply Inc. 9515 Deereco Road Suite 1012, Timonium, Md. 21093

Phone 443-279-0632 or 1-800-260-0907

Fax 443-279-0015

rick@harborcitysupply.com