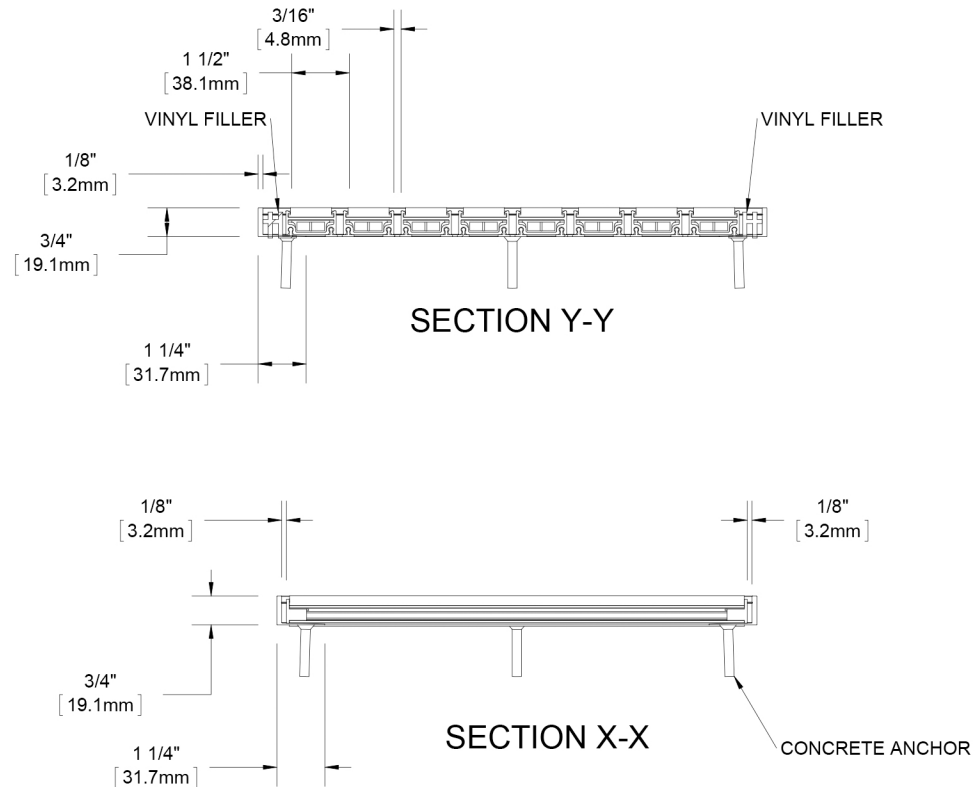
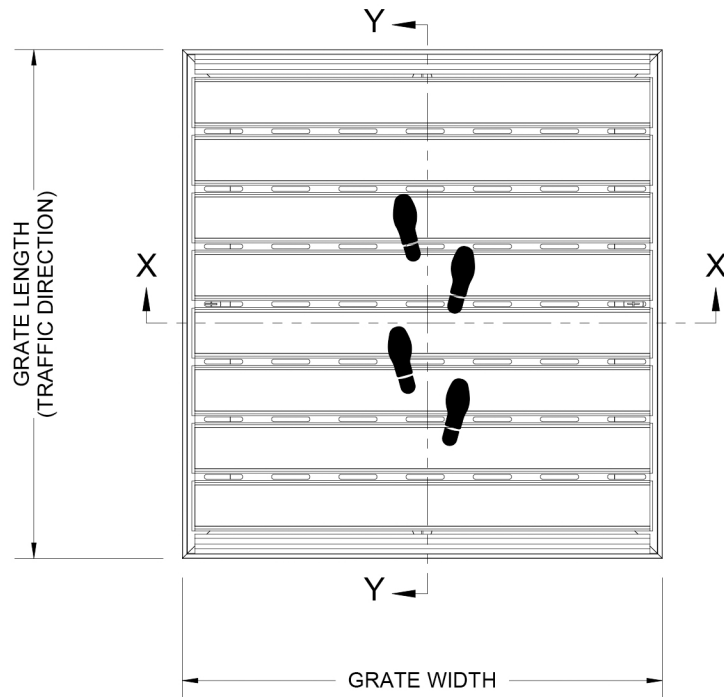


*BGR34P PREMIUM CARPET INSERT
 *BGR34R RUGGED SCRUB INSERT
 *BGR34V VINYL INSERT
 *BGR34E ECOTREAD INSERT
 *BGR34U RIBBED RUBBER INSERT
 BGR34G VINYL ABRASIVE INSERT
 *BGR34B BRUSH INSERT



NOTES:

- STANDARD MAXIMUM SECTION SIZE OF GRATE/MAT WIDTH NOT TO EXCEED 10'-0" UNLESS OTHERWISE SPECIFIED
- FRAME ANCHOR SPACING: 6" FROM CORNERS, 24" MAX
- VERIFY TRAFFIC DIRECTION AND THAT SECTIONING DOES NOT OCCUR IN A TRAFFIC LANE
- ALL RAIL COMPONENTS ARE MADE OF 6063-T6 ALUMINUM ALLOY, ALL FRAME COMPONENTS ARE MADE OF 6063-T5 ALUMINUM ALLOY (NOT APPLICABLE WITH VINYL SURFACE MOUNT FRAME)
- TREAD RAILS MUST RUN PERPENDICULAR TO TRAFFIC DIRECTION
- TRIM THE FILLER PROVIDED TO ENSURE A TIGHT FIT IN THE TRAFFIC DIRECTION (NOT APPLICABLE WITH VINYL SURFACE MOUNT FRAME)
- GRATE DIMENSION ALLOWS FOR CLEARANCE BETWEEN GRATE SECTIONS AND FRAMES IN THE WIDTH DIMENSION

DESCRIPTION:

Roll-up GRATEDesign® 3/4", Aluminum, Roll-up Grate with Mechanically Fastened Level Bed, Aluminum Frame

BGR34-FLBM

SCALE: NTS

F-14

* AVAILABLE IN ALTERNATING TREADS