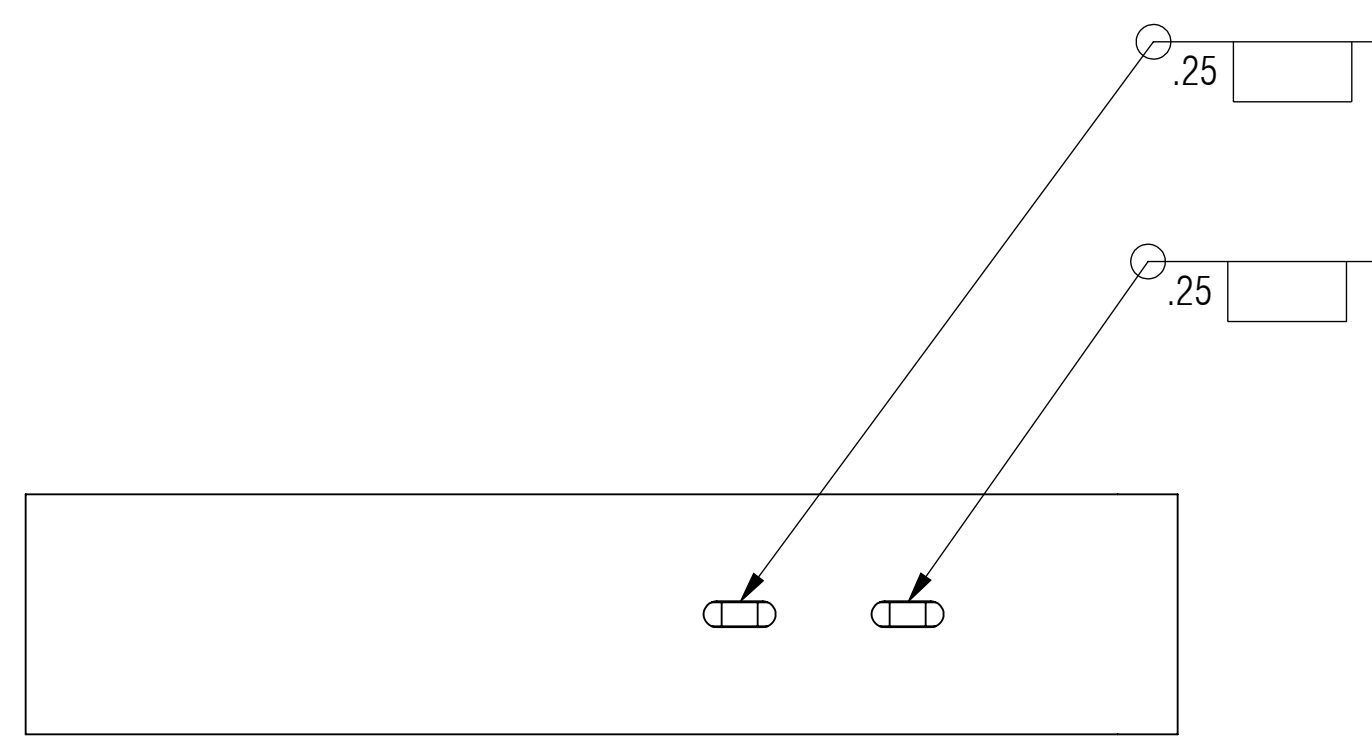


REVISION STATUS - ALL SHEETS ARE THE SAME REVISION				
ZONE	REV.	DESCRIPTION	DATE	APPROVED
	X1	DEVELOPMENT	03/06/2015	KRH

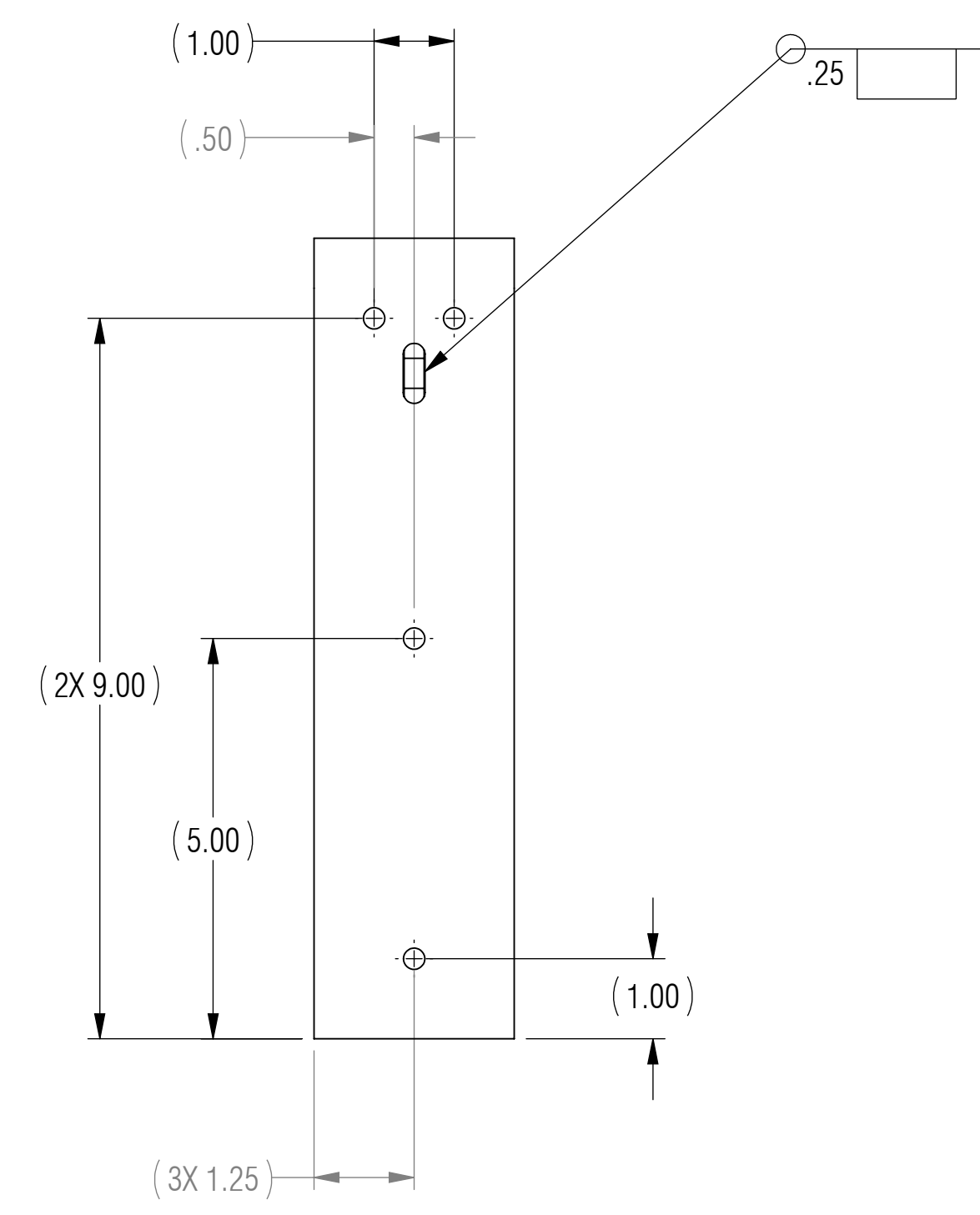
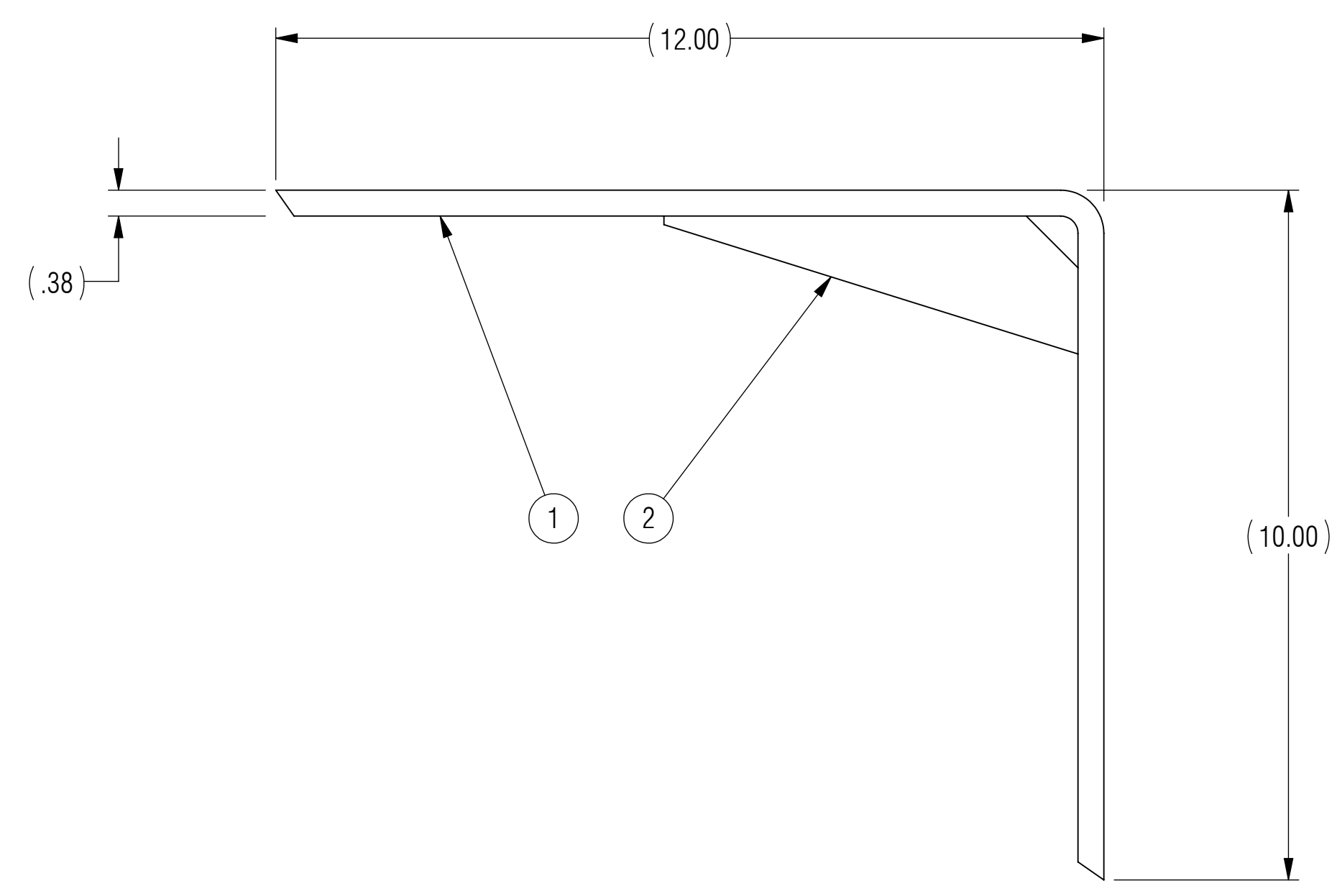
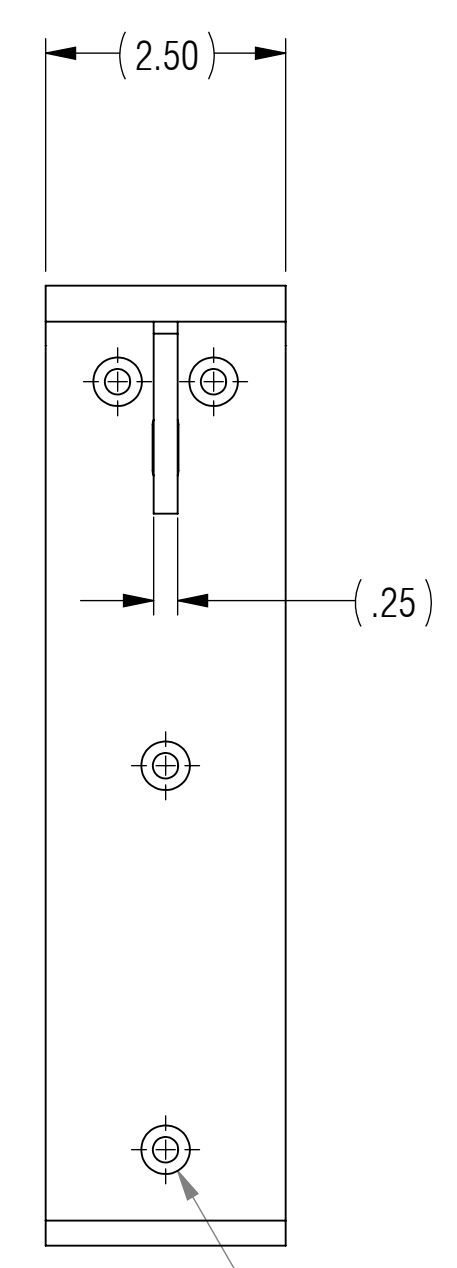
NOTES: UNLESS OTHERWISE SPECIFIED

- 1 MATERIAL: FOR PART MATERIALS REFERENCE SEPARATE PART DRAWINGS.
- 2 ALL DIMENSIONS ARE TO THEORETICAL SHARP.
- 3 REMOVE BURRS AND BREAK ALL SHARP EDGES .03 MAX.
- 4 ALL DIMENSIONS ARE IN INCHES UNLESS STATED OTHERWISE.
- 5 PARTS SHALL BE FREE OF GREASE AND CUTTING FLUID.
- 6 POWDER COAT PER MIL-PRF-24712A (TYPE 3, CLASS 3)

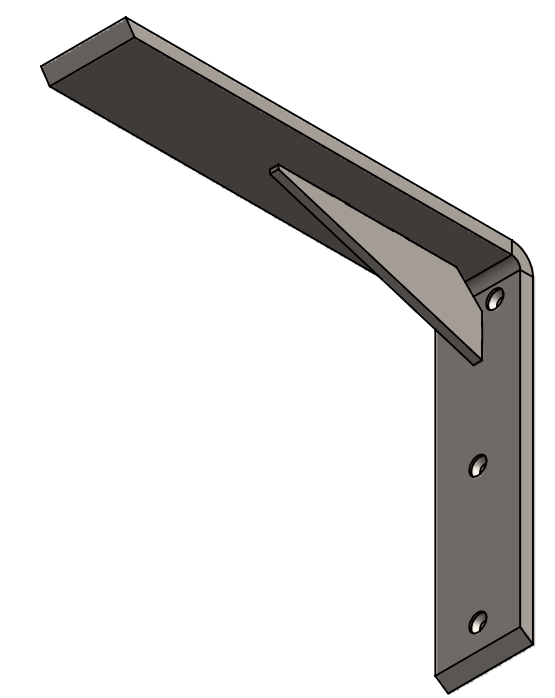


Example for 12 x 10 - other sizes will have different size flanges.

Please see the product page for specs on the different sizes.



(4X ϕ .27 THRU ALL)
 \sphericalangle ϕ .51 X 82°
 \sqsubset ϕ .51 ∇ .06



ISOMETRIC VIEW
FOR REFERENCE ONLY

RELEASED

BOM TABLE			
ITEM NO.	PART NUMBER	DESCRIPTION	QTY.
1	CSP-0041-12	FORMED BRACKET, 90 DEGREES, VARIABLE LENGTH A X VARIABLE LENGTH B X .38 IN	1
2	FMBG-6	GUSSET, 6 X 2 INCH, SEMI-CIRCLE KEYWAY	1

UNLESS OTHERWISE SPECIFIED: DIMENSIONS ARE IN INCHES		ENGINEER		<p>A CENTERLINE STEEL, LLC DIVISION</p>
TOLERANCES ARE:		ENGINEER		
.XX ± .01	ANGLES XX° ± 1°	CHECKED	CAS 03/06/2015	
.XXX ± .005		DRAWN	KRH 03/06/2015	
INTERPRET DRAWINGS IN ACCORDANCE WITH:		MANAGER APPROVAL		THE INFORMATION ON THIS DRAWING IS PROPRIETARY AND SHALL NOT BE DISCLOSED, USED, OR DUPLICATED FOR PROCUREMENT OR MANUFACTURING PURPOSES WITHOUT THE EXPRESS WRITTEN CONSENT OF CENTERLINE STEEL, LLC
ASME Y14.100 ENGINEERING DRAWING PRACTICES		THIRD ANGLE PROJECTION		
ASME Y14.38 ABBREVIATIONS				
ASME Y14.5 DIMENSIONING AND TOLERANCING		USED ON APPLICATION		DRAWING NO FMP-12X10
ASME Y14.6 SCREW THREAD REPRESENTATION		SCALE 1:2		REV X1
ASME Y14.8 CASTINGS, FORGINGS & MOLDED PARTS		SHEET 1 OF 1		
AWS A2.4 WELDING SYMBOLS				
IEEE STD 315 SYMBOLS FOR ELECTRICAL AND ELECTRONIC DIAGRAMS				