

DOOR SIZE (W X H)	No. OF LATCHES	PRODUCT PAINTED STEEL	PART # 'S STAINLESS STEEL
8 X 8	1	3218010	
12 X 12	1	3218012	3218412
12 X 24	1	3218020	
14 X 14	1	3218014	
16 X 16	1	3218016	3218416
18 X 18	1	3218018	3218418
22 X 30	1	3218022	
22 X 36	1	3218027	
24 X 24	1	3218024	3218424
24 X 30	1	3218023	
24 X 36	1	3218028	3218436
24 X 48	2	3218031	
30 X 30	1	3218030	
32 X 32	1	3218032	
36 X 36	1	3218036	
36 X 48	2	3218038	
48 X 48	2	3218048	

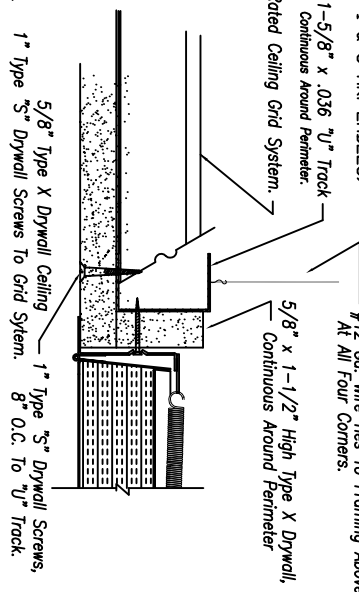
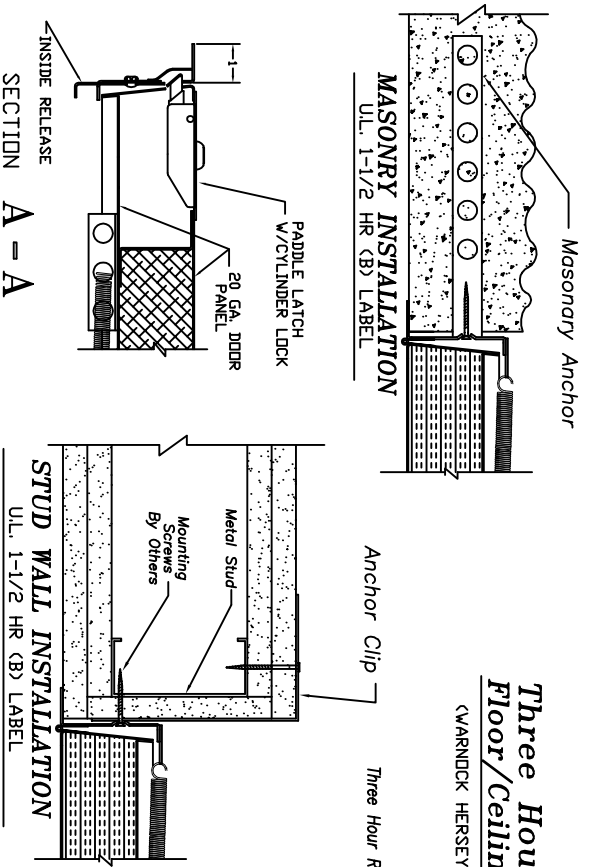
**STANDARD DOOR FEATURES AND NOTES**

- 16 GA. CRS. FRAME
- 20 GA. CRS. INSULATED DOOR PANEL
- CARRIES BOTH UL AND CUL 1-1/2 HOUR, CLASS B FIRE RATING
- \* = CARRIES VARNICK HERSEY LABEL FOR 1 & 3 HOUR NONCOMBUSTIBLE FLOOR/CEILING SYSTEMS WHEN SIZE < 24' X 36'
- WHITE POWDER COATED STEEL
- ROUGH REQ. WALL OPENING = WIDTH + 1/2" X HEIGHT + 1/2"
- WALL APPLICATION ONLY WHEN SIZE > 24' X 36'
- TWO PADDLE LATCHES USED WHEN SIZE > 36' X 36'

THESE DOORS HAVE BEEN TESTED AND PASSED THE UL-1-1/2 HOUR TEST AND \*VARNICK HERSEY 1 & 3 HOUR TESTS. THEY CARRY BOTH THE UL & VARNICK LABELS. ANY CHANGES REQUIRE THEIR APPROVAL OR NO LABELS CAN BE ADDED.

**Three Hour Rated Non-combustible Floor/Ceiling Installation.**

(VARNICK HERSEY 1 & 3 HR. LABELS)



\$25 SPECIAL SET UP FEE UPON ORDER

ORDER WILL NOT BE RELEASED FOR FABRICATION UNTIL SIGNED COPY IS RECEIVED AND APPROVAL OF GENERAL ARRANGEMENT AND DETAILED DIMENSIONS OF THIS DOCUMENT ARE REQUIRED BEFORE THE ORDER IS ENTERED FOR MANUFACTURING.

APPROVAL SIGNATURE: \_\_\_\_\_  
 TITLE HELD: \_\_\_\_\_  
 DATE OF APPROVAL: \_\_\_\_\_

THIS DRAWING IS THE PROPERTY OF MILCOR AND CONTAINS PROPRIETARY INFORMATION. NOT TO BE REPRODUCED OR REDISTRIBUTED WITHOUT MILCOR'S WRITTEN PRIOR CONSENT.

**MILCOR**

5030 Corporate Exchange Blvd. SE, Grand Rapids, MI 49512  
 P.H.: 800-624-8642 FAX: 855-549-2674 WWW: milcorinc.com

**UNIVERSAL FIRE RATED DOOR FOR WALLS AND CEILINGS**  
**UFR ACCESS DOOR**

QUANTITY:	SELECT STD. DR SPEC.
JOB NAME:	
REP NAME:	
STANDARD ACCESS DOOR PART #:	
SPECIAL ACCESS DOOR (FILL OUT SPECIAL OPTIONS)	