



AMERICAN SPECIALTIES, INC.

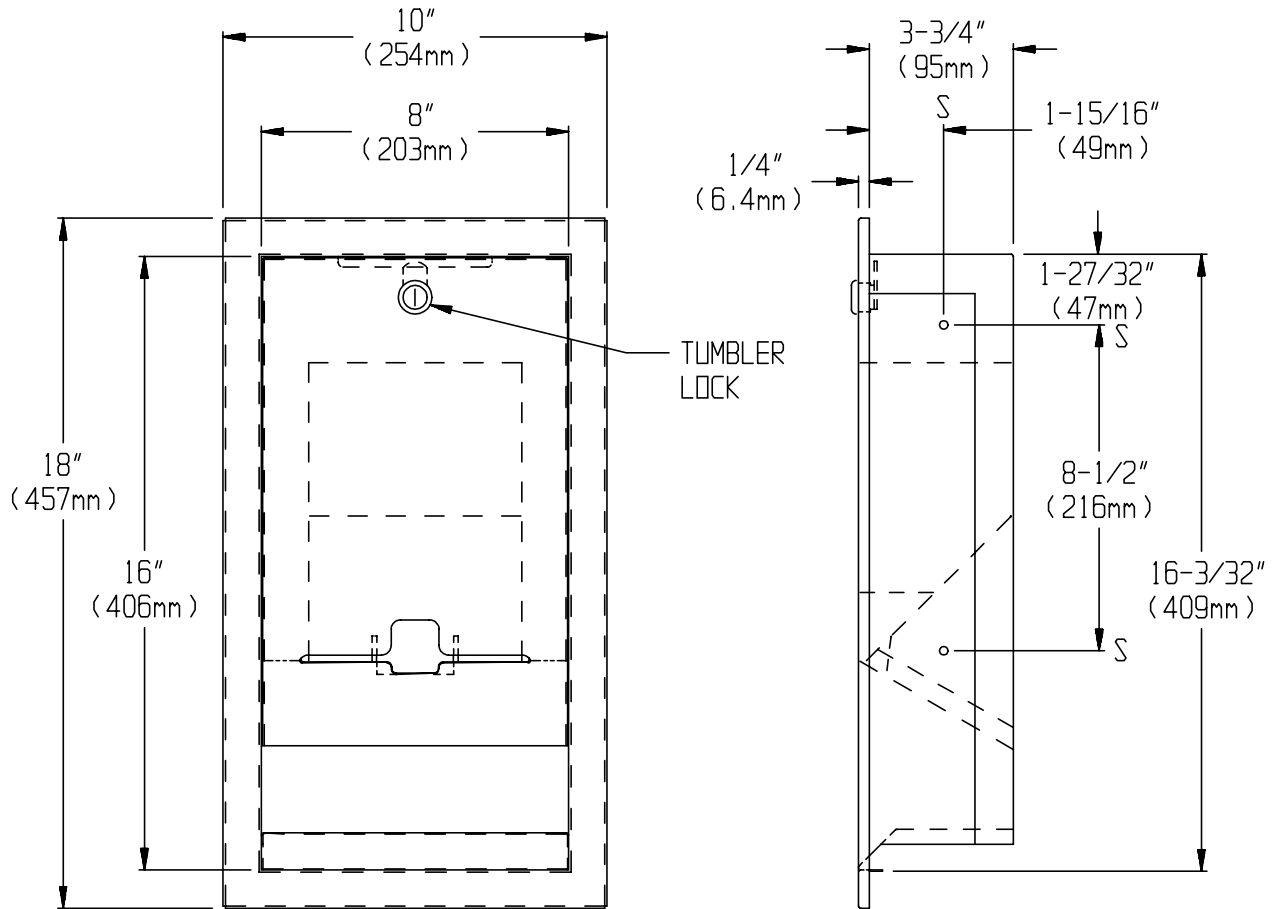
441 Saw Mill River Road, Yonkers, NY 10701 (914) 476-9000
www.americanspecialties.com

MODEL No: 9016

ISSUED: 11-05

REVISED:

RECESSED BABY CHANGER BED LINER DISPENSER



SPECIFICATION

Recessed Baby Changer Bed Liner Dispenser shall hold and dispense 30 paper liners. Unit shall be fabricated of alloy 18-8 stainless steel, type 304. Frame and cabinet shall be 22 gauge and door shall be 20 gauge. All exposed surfaces shall be N° 4 satin finish and be protected during shipment with a PVC film easily removable after installation. Door shall be attached to cabinet at bottom with a full length 3/16" dia. (5mm) stainless steel multi-staked piano hinge and be held closed with a tumbler lock keyed alike to other ASI washroom equipment. Face trim shall be 1" (25.4mm) wide formed from one piece with no mitres, welding or open seams and have 1/4" (6.35mm) square return to wall. Structural assembly of all components shall be of welded construction.

Recessed Baby Changer Bed Liner Dispenser shall be Model N° 9016 as manufactured by American Specialties, Inc. 441 Saw Mill River Road Yonkers, New York 10701-4913

INSTALLATION

Unit is recessed mounted in wall using N° 10 screws (by others) through concealed mounting holes provided. For compliance with ADA Accessibility Guidelines, unit should be installed so that liner dispenser slot is 54" (1372mm) maximum above finished floor (AFF) if clear floor side reach access is provided or 48" (1219mm) maximum AFF if clear floor forward reach access only is provided. To comply with CalDAG mounting height, liner dispenser slot should be 40" (1016mm) AFF. Note that bottom of RWO is 3/4" (19mm) above bottom of unit.

Rough Wall Opening (RWO) required is..... 8-1/4" W x 16-1/4" H x 3-3/4" D minimum (210mm x 413mm x 95mm)

OPERATION

Liners are self-feeding until supply is depleted. Unit may be reloaded with a partial load in-place and will continue to feed properly.

Accessory Specialties

AMERICAN DISPENSER

Desert Ray Products

WATROUS .INC.